

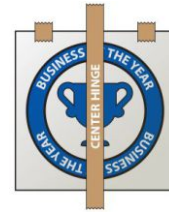
# VINYL APPLICATION INSTRUCTIONS

## Materials

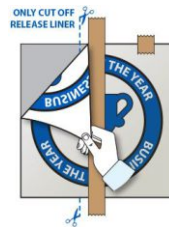
- ✓ Scissors
- ✓ Squeegee (or old credit card)
- ✓ Tape Measure
- ✓ 70% Isopropyl Rubbing Alcohol
- ✓ Masking Tape

## Technique

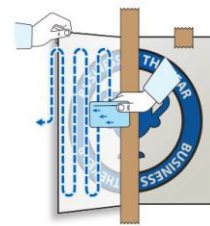
- ✓ For best results, ensure that the temperature is above 50°.
- ✓ Before attempting to install, lay the decal on a flat surface and perform a “pre-peel” by peeling back the top layer to make sure the decal is sticking to the application tape properly and then lay it back down on the backing paper. If the decal is not sticking, stop and lay the tape back down, apply pressure to the areas that are not sticking and then make another attempt to lift the tape and decal.
- ✓ Clean the surface with 70% isopropyl rubbing alcohol thoroughly to remove any dirt, grease, residue, etc, then allow to dry.
- ✓ Tape the graphic in the general area to which it will be applied. Measure and adjust the location of the graphic. Tape down the center once the graphic is measured into place.
- ✓ Lift one side of the graphic and separate the application tape from the backing paper (the decal should stick to the application tape). Using scissors, cut away that half of the backing paper.
- ✓ Hold the application paper away from the working surfaces, keeping it slightly slack and squeegee outward from the center. Pull the squeegee firmly against the surface, hard enough to squeegee out any air from beneath the decal.
- ✓ Discard the center strip of masking tape and lift the remaining side of the graphic. Remove the back paper and squeegee out from the center. Squeegee the entire graphic again, pressing firmly.
- ✓ Remove the application tape by pulling it back on itself, not more than 90 degrees to the surface.



Position Decal with Masking Tape



Remove Half of Backing Paper



Apply Decal Using Squeegee



Repeat Process on Other Side, Remove Masking Layer

